



# Bobelaine Audubon Sanctuary

an update by Patti Farris, SacValley CNPS Board Member

<https://www.sacramentoaudubon.org/bobelaine-audubon-sanctuary>

Birders and native plant lovers go together like pb and j, so when local Audubon Society member Maureen Geiger asked SacValley CNPS volunteers for native seeds to start a pollinator garden at the Bobelaine Audubon Sanctuary just north of Sacramento, we were happy to help.

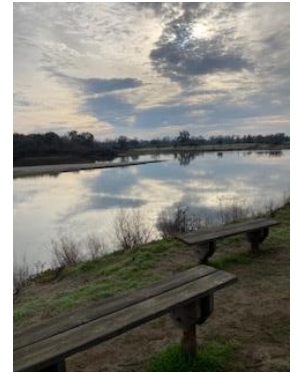
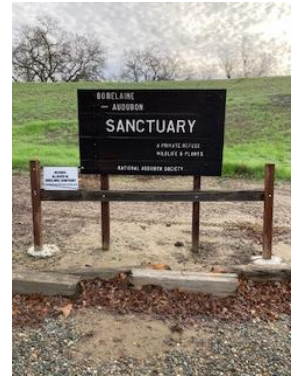
In 1975, Bob and Elaine Crandall donated 430 acres along the west side of the Feather River to the National Audubon Society as a rare remnant of once common riparian habitat. Bobelaine is described as a Sycamore alluvial woodland, and estimates are that less than 2,000 acres of this type of habitat are left in the west, making Bobelaine an especially valuable space for wildlife and native plants.

Bobelaine is overseen by both the National Audubon Society and California Fish and Wildlife. It is regularly tended by a group of dedicated volunteers from the Sacramento Audubon chapter.

In addition to the usual tasks of removing invasive plants and maintaining trails, on a recent Friday, volunteers were on hand to deal with a massive downed oak blocking a trail. It was determined that rerouting the trail would give a better outcome than trying to remove such a large obstruction, so the group set to work clearing brush for the trail reroute, allowing the giant oak to rest in place and give back to the sanctuary in a new way.

What's new? The hope is that this garden is the first effort in a longer term one to attract and serve native butterflies, bees, insects and of course birds. Bobelaine is a perfect gem of a place for this effort. And, in the long run, this is as good a thing as we can do for the planet.

Bobelaine is on the bank of the Feather River about 40 miles out of Sacramento but is well worth the drive to revel in its beauty, abundance of birds and other wildlife, including a family of otters, many native plants, and now the newly added pollinator garden seeded with donations from Sac Valley CNPS members.



**Did you know that California is the MOST HYDROLOGICALLY ALTERED LANDMASS ON THE PLANET?**

- Riparian Woodlands: Only 1% still considered intact - - Wetlands: More than 90% have disappeared
- Vernal Pools: 66% have been destroyed - Freshwater Marshlands: Less than 6% remain
- California Native Grasslands: Only 2-3% remain — Source: [www.CNPS.org](http://www.CNPS.org)